



For newer users of modern software like Photoshop Elements there is a problem that is difficult to overcome. How does the newer user distinguish between the 1000's of options the software gives them from those few which are essential to get a job done. These 1000's of options means that our learning curve is far steeper than it needs to be as we wade through all the options we don't need until we find those we do.

That is hopefully where our DVD will help enormously because we will take you around all the nice to have options to the ones you need. We will help you create those improvements in your images quickly and easily. We also believe that a technical walk through of software is not the way to learn at all. There has to be the odd overview at times, but that's about it. We all learn faster and are able to retain information better, when we learn a little at a time. We learn that information best while carrying out real life projects, not in technical exercises.

When you combine our photographic experience with our philosophy on presenting the information, the result is an easy to follow tutorial DVD that takes you right where you want to go. Once we have some experience of the software, then we can then take a look at one or two of the other more complex options and by then, we will be in a far better position to understand them.

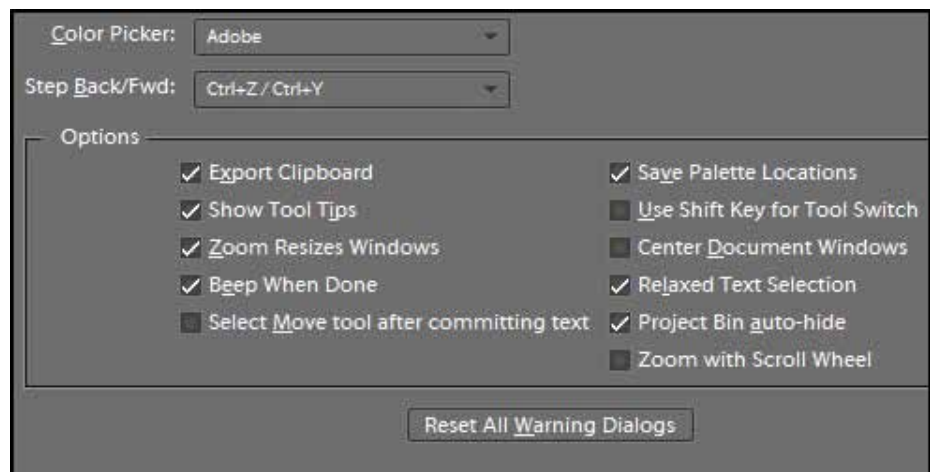
So, here we have 24 separate videos running for 5hrs 30 mins covering everything you will need to know to start producing good work. It will give you the confidence to make the improvements in your images that you require and it will do it quickly and simply. Our customer comments on our web pages is our testimony to that statement.

The Elements 8 Edit Screen Preferences - 15:08 Minutes

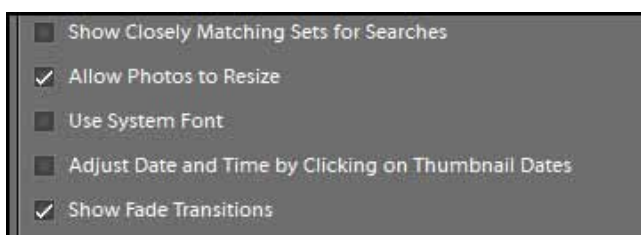
Here we start our tutorial in Elements 8 by taking you through the preferences.

We make suggestions regarding the settings you need and explain why. At the same time we give advice on sidestepping those you don't need, which speeds up the learning.

We try to make sure we impart just the right amount of information without getting too technical or too detailed.



The Elements Organiser Preferences - 3:19 Minutes

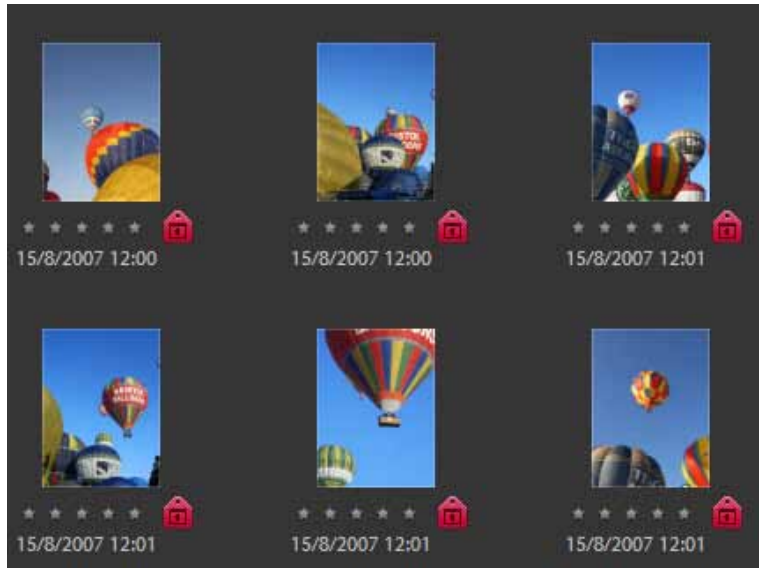


The Elements Organiser has its own set of preferences and here we take a very brief look at them.

The vast majority of these preferences are set with parameters that are ready to use, so we see little benefit of filling our heads with information that we certainly don't need at this stage.

You can see by the duration of this video that we keep things to an absolute minimum.

Getting Images into the Organiser - 29:12 minutes



To start any editing we need to get some images onto our computer and the Organiser can help us with that. Here we demonstrate how we acquire images from a flash card, camera, USB stick or any another storage device.

We can use the organiser to catalogue these images and search for those we are looking for. We demonstrate how to create categories and sub categories and generally keep track of your images.

Finally the Organiser is the perfect tool when we are just browsing for an image to work on.

Image Format - 16:42 minutes

This is a subject that we know does cause some confusion when we first become acquainted with image editors. We may need one format for our prints, another for our Camera Club competitions and another to fit an image into our favourite frame.

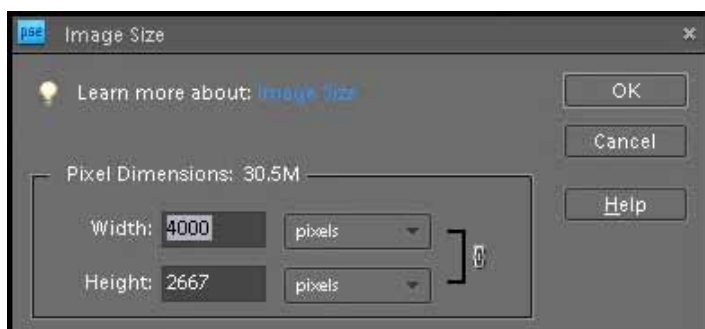
If we ever come to make a slide show we may need to consider other formats too, it all can get so confusing.

We also hear mention of other formats of 5:4, 4:3, 16:9 and 16:10, it can all just get in the way of our main aim, to produce some good images.



In this video we spend just a little time trying to ensure that we understand enough, not to get confused or bogged down with unnecessary information.

Resolution - 16:24 minutes

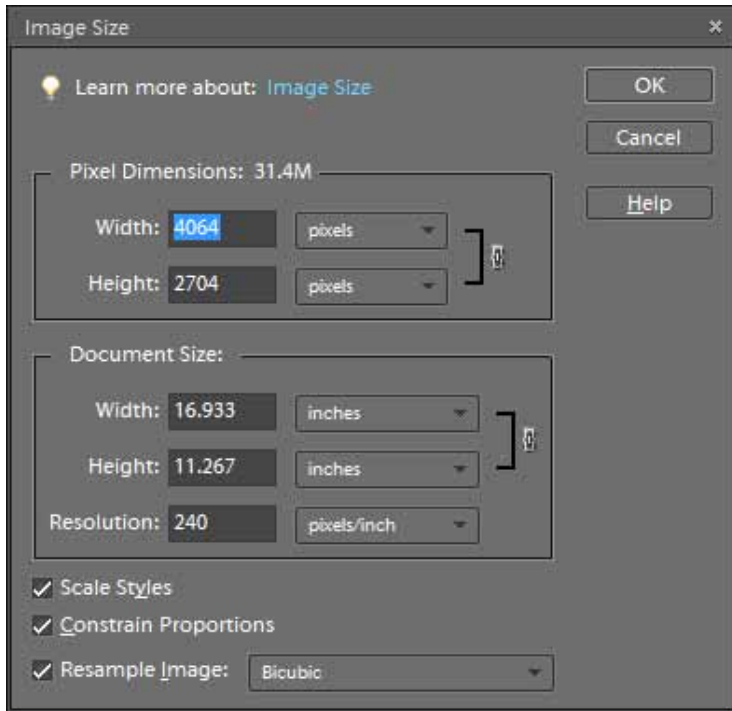


We do need to talk briefly about resolution too and we are well aware that many explanations of this topic can take up 10 pages and leave us more confused than ever.

Here we demonstrate the basics of resolution differently using simple demonstrations.

There really isn't a lot of point in trying to maintain quality throughout our image editing if we then lose our image quality because we don't understand a couple of the fundamentals of resolution. Hopefully our demonstration will not add to any confusion

Save Formats - 10:06 minutes



There are more ways to save an image than we can shake a stick at, so why all the different types and how do we know what is best to use?

Simple, we will guide you to the ones you want and clearly demonstrate why, using on screen images and practical demonstrations.

The good news is that for now you will only need two save formats and we cover both of those in just the detail you will require.

The Quick Photo Edit Tools - 15:55 minutes

Photoshop Elements 8 allows us to edit our images ourselves in the full editor, or it can assist us to edit our images via the Quick Photo Edit Tools. Now in most cases the Quick Photo Edit Tools may give us just the result we need. There is no doubt that these are powerful tools.

They are designed to assist us and will either make all the adjustments to tone, contrast and colour automatically, or assist us in some simple yet effective ways.

Like the little thumbnails you can see in our screen grab, make the changes to saturation, hue, contrast etc with a click of a thumbnail.



The Levels Command - 10:19 minutes

However we get our images onto the computer we should take a look at the levels for any image we are working on.



This can make a dramatic difference to our images, especially when the lighting may have not been that good at the time of taking the shot. However, in our flower image to the left the problem was more underexposure.

In this video we demonstrate Levels where the before and after result can be quite dramatic.



The levels are easy to understand and adjust and they are a must know part of Photoshop Elements 8.

The Clone Tool - 30:32 minutes



The Clone tool is one of the most vital tools we have to master in Elements 8 because it is so versatile and we can use it successfully in a multitude of images.

Almost every image we open will require some work with the clone tool and the image to the left was no exception. Lots of plastic bottles used as moorings spoil the shot completely.

The Clone tool, like any other tool we may use needs a little practice and it doesn't take very long for us to master this tool. The clone uses a

brush to sample one area and then allows us to paint those cloned pixels into another. A soft brush is usually best and in our demo you will see how simple use of the Clone Tool can make such a difference to the final image.

We also demonstrate how to protect parts of your image when you have to clone very close to an area you don't want to change.

Finally we take our first brief look at layers to demonstrate how you can Clone effectively without any risk to your image whatsoever.



The Crop Tool - 14:23 minutes

The Crop Tool is another vital tool in Elements 8 that we will use many times. In its basic use we probably all understand that the Crop Tool will remove parts of the image we don't require.

However, the crop tool can be a vital tool to aid or even create a great composition in our images.

We also demonstrate how we can prepare an image for printing with the Crop Tool so that it fits perfectly into a ready made frame we may have.

We can predetermine the actual size we want and have confidence that we will achieve the perfect size and format.



Sharpening an Image - 10:49 minutes

If we are not careful it is very easy to over sharpen an image for printing and of course we may not realise that until we have used a sheet of expensive paper and a fair amount of ink. Here we demonstrate the methods we have used over a number of years. We don't mean to say that this is the only way to sharpen images, but it has worked for us over a fair period time and continues to do so.

What we must not do is to think that image editing and the sharpening tools in Elements 8 can make up for poor camera technique.



We must get our images as sharp as possible to start with when we are shooting them. In this video we demonstrate the basic unsharp mask tool for sharpening an image .

Basic it may be, but generally it is what we have used for years and our large prints show no sign of sharpening flaws and are well received everywhere we go.

Creating a Selection - 13:11 minutes



It is quite common for one part of our picture to need a different manipulation to the rest. With our image on the left the sky needed much more impact than it has, but in doing so we make the rest of the image too dark. The answer is to make a selection and adjust only the part that needs it.



Global changes to an image are all very well, but a global change will not always give you the result you need

This is another of those must see sections of this DVD because you will use these same techniques 1000's of times in many different images.

Making a Cutout and intro to Layers - 29:00 minutes



There will be times in our digital photography that we need to make an effective selection of an object, in our case here a seabird. We will need to cut out the subject leaving it floating on a transparent background so we can drag and drop it into another image.

In this video we take you through that process, using automatic tools to make a very quick, but effective selection.

While going about this practical real life project we will also be introducing you to layers, by adding our bird to another image using Element layers.

We also have to make sure that the bird is the right size too, or it may not look right.

This is an important video on this DVD as it combines a number of techniques. None of them are difficult or tricky to learn, but we need them all for a good final result.

We also take a look at the Quick Selection Tool and the Selection Brush Tool.



Fixing Converging Verticals - 4:49 minutes



Converging verticals in an image is caused when we use wide angle lenses and look up at our subject.

Buildings are generally the subject we see this most. Of course converging verticals can be a blessing or a curse. With very tall buildings the converging lines can give the image impact and appeal, the same can be said looking straight up from below tall trees.



Other times we may want to put the problem right and Photoshop Elements 8 handles this with ease without any deterioration in the image quality.

Applying Filters - 14:18 minutes

Applying filters is a simple and easy process and we all cut our teeth on image editing software trying them out. If it is so easy to see why do we so many terrible images where a filter has been slapped on in a hope for the best sort of way.

Yes we can apply filters easily, but there are a number of techniques, tips and tricks to ensure you get what your looking for.

For example modern cameras producing high resolution images are not always desirable for filter effects.

In fact more often than not we get far better results with low resolution images. Here we explain why and point you in the right direction.

We also demonstrate a great filter technique that you can apply to a variety of images. However, you will not create this effect by just applying a filter from the Elements 8 filter pack.



The Healing Brushes - 8:24 minutes

These tools are a great addition to Photoshop Elements 8. They are second only to the clone tool and in some circumstances I would rather use the Healing Brush, particularly the Spot Healing Brush for problems like we see to the right. Dust spots

Here we demonstrate the Healing brushes in a very practical way and you will use these tools over and over again in your digital Photography.



Creating a Black & White Image - 9:31 minutes

Elements 8 boasts some terrific tools for converting colour images into monochrome.

So, we have little excuse now for creating those dull muddy looking images of the past.

We are given some great preset options and manual sliders too if we wish, but you can see how easy this is by the length of the video.



Creating a Soft Focus 5:45 minutes

Using Photoshop Elements 8 and layers we have hundreds of different soft focus filters at our disposal.

The technique creates a delightful effect when applied to the right image, but there's more.

Using the power of layers we can make sure that parts of the image remain sharp, such as the eyes, nose or mouth.

The result is a completely controllable filter effect that looks great on a wide variety of subjects.



Toning an Image - 4:34 minutes

Toning of images has always been popular even back in the darkroom days. Sepia tones and Blue tones were created with chemicals, but now any tone we choose can be created through Elements 8

The most popular is probably the Sepia tone we show here and when matched with the right subject it is difficult to beat.

However, all tones have a place and a blue tone applied to winter scene can enhance the feel of winter and add to the appeal of the image.

In this section we demonstrate the process to apply any tone you wish.



The Recompose Tool 10:35 Minutes



The recompose tool is rather clever in that it can turn a landscape format image into a portrait format without distorting the subject matter within the picture.

There are also ways using this tool to remove a person from the image. Paint over the person you want to remove and the software will take care of the rest. In our example it did a fair job, but just left a little work to do with the clone tool.



Nothing that could not be done in a couple of minutes

Image Storage and Backup 16:19 Minutes



While these subjects are not directly linked to Elements 8, they are pretty vital to our digital photography. Without good work practices we could lose a lot of our valuable images.

What we do in this section is explain how we have gone about making sure we have good housekeeping measures in place. Our methods are not unique, but we have never lost any images in over a decade of shooting digital Images. So, we must be doing something right. This section offers you the benefit of our experience.



Graphics Tablets 9:49 Minutes

As you watch our demonstrations you may wonder how we can move about the screen and use the Photoshop Elements 8 tools with a smooth fluid motion. You may wonder how we can make quick and easy selections and much, much more?

The answer is over the page.....

This is a Wacom Bamboo graphics tablet and we have been using a Wacom tablet of one kind or another for well over a decade. Right now we have three Wacom Bamboo tablets connected to our three PC's and none of them have a mouse attached at all.



The video explains why the work we do is so much easier with a graphics tablet and we also offer some tips and tricks on how best to use them.

Sloping Horizons 8:11 Minutes



Getting our horizons sloping one way or another is something we all do from time to time.

Here we demonstrate how easy it is to correct those errors in Photoshop Elements 8.



Camera Club Competition image preparation 12:00 Minutes

As Competition Secretary of a Camera Club myself I have become aware that this is another of those subjects that can cause quite a degree of confusion.

So, as we will need Photoshop Elements 8 to prepare our images, it makes sense to include a short tutorial on this subject.

We will want to present our images at their very best. We show you how.



Extras

We have include the majority of the images we have used in this DVD and also 2 of our latest Audio Visual Slide Shows. These shows will be seen at their very best on monitors running 1920*1200, but they can be viewed on all resolution monitors.

Enjoy the DVD